

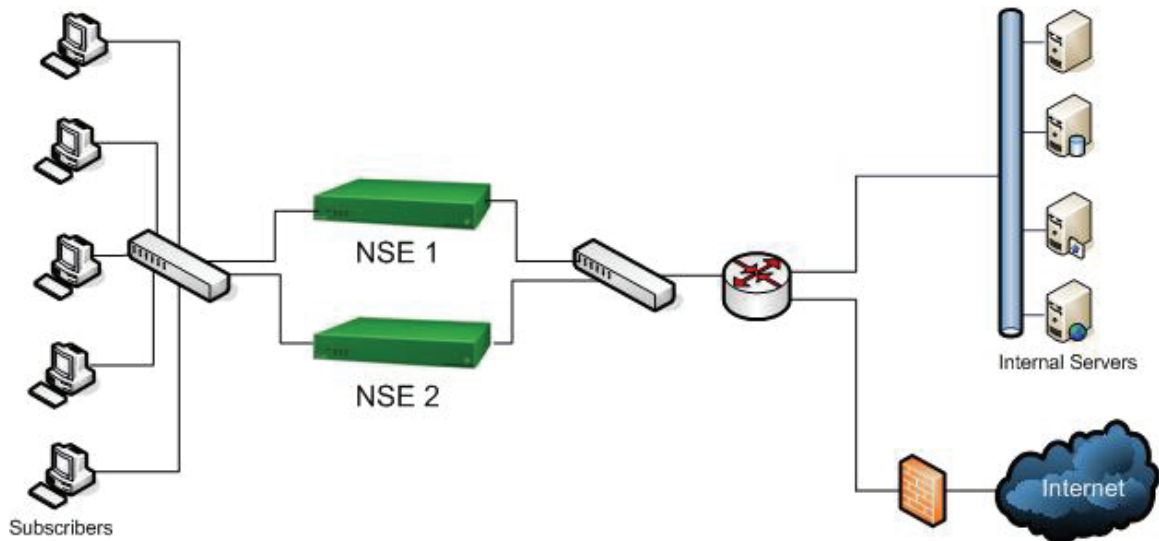
## NSE Module Offerings

### High Availability Module

The Nomadix High Availability module adds additional reliability to Nomadix customers by enabling failover capability. This is accomplished by periodically backing up the configuration and account database information on the primary gateway to secondary unit. At the same time, the secondary monitors the presence of the primary via a heartbeat mechanism. If the primary should fail for any reason, the secondary will detect this, and then automatically reboot itself into the primary role, utilizing the same configuration parameters that were in effect prior to the failure.

The use of the High Availability module provides significant value add in environments where network downtime must be minimized and guaranteed access needs to be maintained.

At the current time the High Availability option does not provide a load balancing function. The secondary does not become “operational” from the perspective of the overall network unless and until the primary goes down. The module is supported on all Nomadix wired platforms. It is not available on Nomadix wireless devices.



**One NSE functions as primary, the other as secondary. If the primary fails, the secondary detects this and then takes over the primary role.**